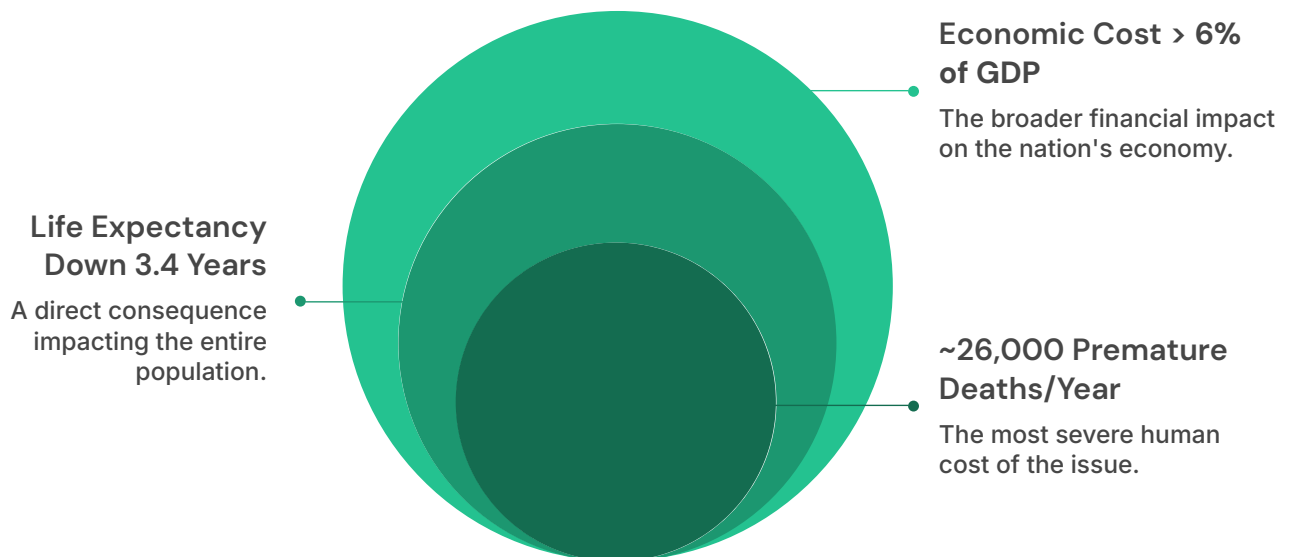


Kathmandu Air Pollution Early Action Protocol 2026 (pilot)

The IFRC/NRCS Kathmandu Air Pollution Preparedness and Emergency Response Initiative is planned for February–April 2026, the period when air pollution in Nepal is seasonally worst. Nepal's topography, transboundary pollution, urban emissions, and winter temperature inversion—especially in the Kathmandu Valley—cause persistent exposure to harmful pollutants such as PM_{2.5}, CO, and NO₂.

Air pollution is identified as Nepal's leading risk factor for death and disability, reducing average life expectancy by 3.4 years, causing around 26,000 premature deaths annually, and imposing economic costs exceeding **6% of GDP**.



Objectives and Approach

The initiative aims to reduce health impacts among vulnerable populations—elderly people, pregnant women, young children, people with chronic diseases, and outdoor workers—through targeted preparedness and response. Emergency responses will be triggered in case of a daily average concentration (for 3 days) at an unhealthy level of AQI > 150, PM2.5 > 55.5 µg/m³



Mask Distribution

Distributing N95/FFP2 masks to protect vulnerable populations



Public Awareness

Raising awareness through IEC materials and mass media



Volunteer Mobilisation

Mobilising volunteers for risk communication



Vulnerability Mapping

Mapping vulnerable groups and supporting local authorities

Expected Outputs

Expected outputs include reaching **18,000 households** in selected wards of Kathmandu, Bhaktapur, and Lalitpur, distributing **9,000 masks** and **6,000 IEC materials**, mobilizing **60 volunteers**, and strengthening real-time vulnerability mapping.

