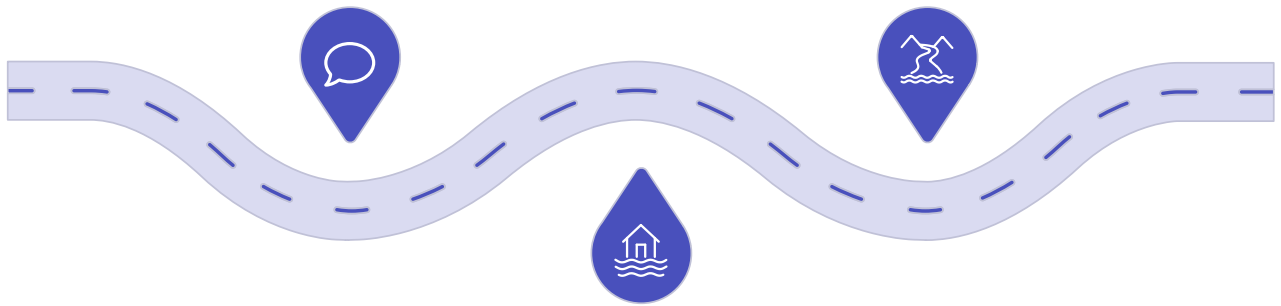




Recovery Plan – 2026

Karnali Quake
Earthquake in 2023

Koshi Floods
October 2025 floods
and landslides



Bagmati Floods
Floods and landslides
in 2024



Executive summary

Nepal has endured a series of severe disasters over the past four years, including major earthquakes in Sudurpashchim and Karnali Provinces in 2022/2023, widespread floods and landslides in Bagmati in 2024, and destructive flooding in Koshi Province in 2025. Months and even years after the initial emergency responses, thousands of families impacted by these three events remain in temporary shelters, without access to safe water, sanitation, or sustainable livelihoods. Instead of progressing toward recovery, affected communities remain trapped in a continuing cycle of vulnerability that prevents them from rebuilding their homes, restoring their incomes and regaining a sense of normalcy.

This Recovery programme outlines the need for finalizing support to communities affected by several different disasters in Nepal over the past several years – in particular, the (1) Karnali Province earthquake of 2023, (2) 2024 floods and landslides in Bagmati and Gandaki Provinces, and (3) October 2025 floods and landslides in Koshi Province.

The International Federation of Red Cross and Red Crescent Societies (IFRC) and the Nepal Red Cross Society (NRCS) working in close coordination with the government of Nepal, propose a targeted recovery intervention to address these gaps and improve community resilience, seeking CHF 1.16 million over two years to implement integrated recovery activities in six districts (in **Jajarkot, Rukum West, Kavre, Sindhuli, Ilam** and **Jhapa**). The programme will target these districts with coordinated support for safer housing, rehabilitation of water, sanitation and hygiene facilities, livelihood support, protection, gender, inclusion and community engagement as well as National Society development.

For instance, assessments conducted in late 2025 confirmed that over 25,000 families were still displaced in Jajarkot, and 770 households were still without drinking water in the districts of Bagmati Province affected by floods in 2024. After each of these events, relief efforts led by the government and supported by humanitarian and other partners reached many of those affected. Some early recovery support was also provided. However, serious vulnerabilities and hardships associated with these events remain, and very limited support has been provided to ensure long-term recovery. This impacts not only the current and future well-being of affected families and local economies – it renders them far less resilient to future risks.

The recent completion of the National Disaster Risk Reduction and Management Authority's (NDRRMA) Detailed Damage Assessment (DDA) for the Sudurpashchim and Karnali earthquakes has opened the way for official cash support to begin flowing for reconstruction, for which it has requested "software" activity support from NRCS, in the form of training and community engagement. In addition, NRCS proposes to contribute both to those affected by earthquakes and the floods through critical WASH and livelihoods interventions, as well as to support and assist authorities to finalize a joined-up recovery response.

Table of Contents

[Executive summary](#)

[1 Rationale for sustained recovery support](#)

[2 Unmet needs and recovery gaps](#)

[3 Targeting strategy](#)

[4 Proposed activities](#)

[4.1 Notes on geographical scope](#)

[4.2 Permanent housing](#)

[4.3 Water, sanitation and hygiene \(WASH\)](#)

[4.4 Livelihoods](#)

[4.5 Mainstreaming protection, gender, inclusion, community engagement and sustainability](#)

[4.6 Government engagement and support](#)

[5 Monitoring, evaluation and learning](#)

[6 Overall budget and timeframe](#)

[7 Detailed budget](#)

1 Rationale for recovery support

While the emergency phase addressed immediate survival and some early recovery needs, the situation in affected communities remains precarious. Thousands of families are still living in temporary shelters, exposed to harsh monsoon and winter conditions.

In the aftermath of the Jajarkot earthquake, the government announced immediate cash grants of NPR 50,000 to construct transitional shelter and most of the households have since received these grants and constructed temporary shelter (2 rooms) by using CGI sheets. The IFRC provided funds through NRCS for 600 houses that were identified for transitional shelter.

Almost two years later, though, displaced families are still staying in their transitional shelters. Moreover, in addition to housing, a Community Perception Study conducted by the UN over the period of four months (August – December 2024), interviewing a total of 6,000 people revealed that livelihoods remained the most pressing unmet need, particularly in flood-affected districts where agricultural fields were destroyed but homes were only partially damaged, resulting in exclusion from most aid targeting.

In early 2025, NDRRMA deployed technical volunteers to conduct a Detailed Damage Assessment (DDA) in the districts affected by the earthquakes in Karnali and Sudurpaschim provinces, and the government announced the intention to provide cash grant support of NPR. 400,000/house for the construction of permanent houses based on these DDA findings. The DDA was completed during the 2025 monsoon season, with findings noted below.

The Government has since been coordinating with various embassies, diplomatic agencies and donor agencies to raise additional funds to cover all targeted households. They have indicated that they will be in a position to gradually provide cash grants to all identified beneficiaries, but that they are facing the problem of insufficient technical volunteers and masons/carpenters in reconstruction areas.

The UN and other humanitarian agencies conducted training for 2,000 masons six months back, but many of them are not available in the communities due to high rate of seasonal migration for work, in particular in Karnali Province. Every municipality has one engineer, but their workload is very high, and they will be unable to manage time for regular visits to construction sites. There are a few technical institutes in this province and NRCS sees an opportunity to mobilize engineers/sub-engineers from these institutes as interns/technical volunteers in the communities. The NDRRMA is also requesting additional “software” activities, including more mason training for homeowners.

In general, households affected by the earthquakes, as well as those affected by floods and landslides in Bagmati and Koshi provinces, have had support for their basic humanitarian needs, such as food, clothing, and emergency shelter. However, affected persons are still waiting for support for their permanent shelter and many water schemes assessed by NRCS are still not rehabilitated¹. Many families have lost their livelihood options because of the flood and landslides are facing many challenges to maintain their income level.

Considering all these impending humanitarian needs of the affected households, this recovery proposal aims to support sustained recovery initiatives. Without a dedicated recovery approach, the cycle of vulnerability will persist. Families will continue to face displacement, food insecurity, and deteriorating health. This IFRC/NRCS recovery plans not about repeating emergency aid—it is about finishing what was started, ensuring that communities can rebuild safely, sustainably, and with dignity.

2 Unmet needs and recovery gaps

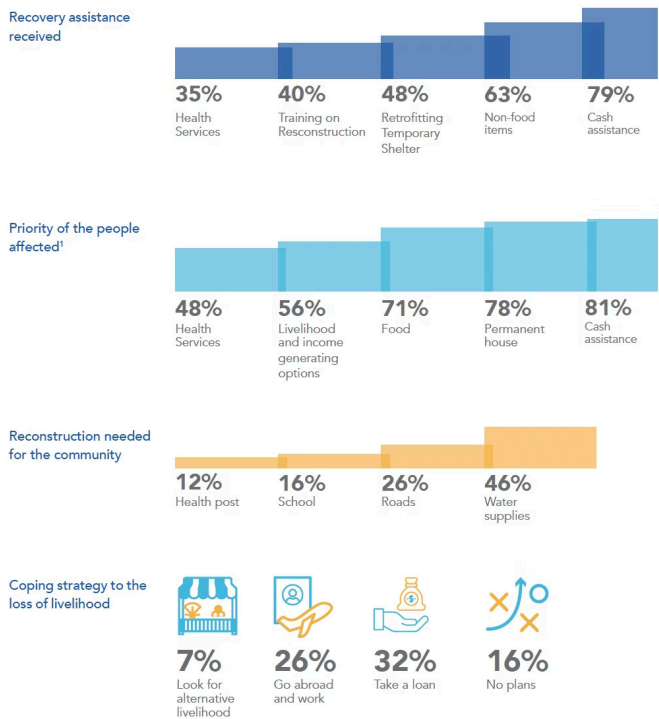
Following each of these disasters, the NRCS coordinated with government representatives at all levels for needs assessments (which NRCS directly conducts along with local authorities) and immediate response actions including rescue, first aid and distribution of relief items. With IFRC network support, the NRCS provided immediate response to each of the disasters covered here, with tarpaulins, blankets, hygiene kits, and emergency shelter support within days of the disasters. These efforts were made possible through rapid mobilization of emergency funds and pre-positioned supplies. In addition, the NRCS response plans included, among other activities, multi-purpose cash (MPC) grants, mental health and psychosocial support, health and hygiene campaigns, and the repair of damaged water schemes. As of October 2025, however, many needs are still unmet, and many people are still living in temporary shelter with inadequate water and sanitation facilities, including some of the 70,000 children, elderly, and persons with disabilities who are at higher risk for respiratory illnesses, mental health issues, and economic displacement.

Two years after the Jajarkot earthquake, many families are still waiting for the NDRRMA to provide the 400,000 NPR cash grant for permanent shelter support. The delays are attributed to procedural bottlenecks, lack of engineers and skilled labour. Vulnerable groups, including women, elderly, and persons with disabilities, are disproportionately affected as they are facing heightened risks of illness, exploitation, and economic hardship.

In January 2025, the Government of Nepal launched a comprehensive Post-Disaster Reconstruction and Rehabilitation Plan², approved by the National Risk Reduction and Management National Council. It stated the situation not only for the Bagmati Floods and Jajarkot Earthquake but also went back to the previous three earthquakes in western Nepal. Among the 77 districts, it is noted that 75 have been affected by earthquakes and floods and landslides from 2022 to 2024 and are therefore covered by the plan. The plan emphasizes the use of local materials and technology for infrastructural works to make it sustainable and resilient as well as ensuring disaster risk reduction and climate change. The following sectors are considered: 1. roads, bridges, transportation 2. Official buildings and infrastructures 3. private houses 4. education infrastructure 5. health infrastructure 6. cultural and heritage 7. electricity, alternative energy, and irrigation, and 8. water, sanitation, and hygiene. While the government's plan is extensive, it is primarily focused on infrastructure, with less focus on affected individuals.

The Karnali earthquake DDA determined that 57,606 houses were damaged in the most affected districts (Jajarkot and Wester Rukum), and 25,866 houses need to be reconstructed. Of these, 14,246 houses are planned to be built in Jajarkot and 11,620 in West Rukum, in a first phase. The two consecutive earthquakes in Doti, Bajhang, Bajura and Achham districts of Sudurpaschim Province in 2022 and 2023 affected 15,231 houses, out of which 3,449 houses were completely destroyed, displacing their residents. The DDA identified 2,018 houses for reconstruction support in these districts.

In the 2024 floods, impacts included damage to 92 water schemes: in Kavre and 58 in Sindhuli. In these areas, the communities had previously collected water from nearby rivers in reservoir tanks. Water users' groups would then oversee distribution of the water to community taps as well as ensuring the maintenance of reservoir tanks and taps. However, most of the water collection points were established near riverbanks and were badly damaged. Since then, these communities have not been able to collect or supply water.



48%

of the interviewed community members have access to recovery assistance



Methodology

Over the period of four months (August - December 2024) 6000 people were interviewed i.e. 1500 individuals in each round.

32 Focus Group Discussions (FGDs) were conducted, i.e. 8 FGD in each round. Altogether 14 female FGD, 10 male FGDs and 8 FGDs with person with disability was conducted.

24 Key Informant Interviews (KIIs) were conducted i.e. 6 KII in each round. It includes the KII with local authorities, community-based organization, Organizations of the Person's with Disabilities, Community Mobilizers, Teachers, Health Volunteers, Community Leaders etc.

Reproduced from: UN JRAP Community Perceptions Study, Summary Report (2024)

The UN-led Humanitarian Country Team published a report on the flood and landslides in October 2024 finding widespread damage to communities and critical infrastructure³. Damage assessments revealed extensive destruction of critical infrastructure, including roads, bridges, health facilities, and schools, as well as significant losses in agriculture and energy sectors. Out of these needs, only a small part was covered by humanitarian partners.

Through emergency response, NRCS was able to repair 74 water schemes (28 schemes in Kavre and 46 in Sindhuli). However, the NRCS's detailed field assessment shows that 18 water collection wells (12 in Sindhuli and 6 in Kavre) are not yet renovated. Thus, 770 households (313 in Sindhuli and 457 in Kavre) still lack access to drinking water one year later. A perception study undertaken by the UN Resident Coordinator's Office (RCO) at the closing of the Joint Recovery Action Plan (JRAP) recovery operation also showed a major unmet need for livelihood support, with a preference for cash (see above).

Most recently, in October 2025, heavy rains triggered floods and landslides in Ilam, Jhapa, and Rautahat districts, impacting lives, properties and infrastructures. Tragically, 56 people lost their lives and 4,902 families were displaced in Koshi and Madhesh Provinces. Jhapa and Ilam suffered the highest impacts. In Ilam, 595 homes were affected, of which 191 were so badly damaged as to be uninhabitable. In Jhapa, 1,064 households were displaced, among total of 4,087 households affected. The NRCS has conducted field assessment in these districts, revealing the need for elevated shelter in Jhapa as well as many tube wells that are filled with sand, leading to water scarcity. Similarly, the relocation of displaced families to safe location, shelter support and livelihood support are seen as top needs. The government has started a DDA process and is planning to provide cash grant for shelter. Building on this evidence, NRCS proposes a targeted recovery intervention in the most affected districts.

3 Targeting strategy

NRCS local branches (including District Chapters and “Sub-Chapters” at the community level) will implement the recovery activities at the community level. These branches have good coordination and collaboration with the local authorities and communities. The NRCS has been working closely with them in every emergency during the relief and recovery phases, including on the question of targeting.

The Ministry of Home Affairs (MoHA) has developed shock-responsive social protection and relief standards, which were endorsed by the cabinet. This standard has clearly outlined criteria to select the most vulnerable households for relief and recovery. The NRCS has developed vulnerability criteria for selecting targeted households in close consultation with the Government authorities and communities. These criteria are aligned with the GoN criteria for targeting.

For the recovery initiative, the following criteria outlined in the relief standards will be followed:

- Displaced Households**
Affected by flood, landslide, or earthquake
- Senior & Vulnerable Adults**
Households with senior citizens
- Single-Women Heads**
Women-led households needing support
- Families with Disability**
Households including persons with disabilities
- Young Children**
Households with children under five
- Pregnant & Lactating**
Households with pregnant or nursing women
- Socially Excluded**
Marginalized or excluded households
- Lost Livelihoods**
Income sources lost by disaster impact

4 Proposed activities

The proposed recovery plan aims to achieve tangible improvements in the lives of **10,500** disaster-affected persons (**2,100** households) across six districts by focusing on housing, WASH, livelihoods, and engagement with the communities and authorities. By end of 2027, the target households transition from temporary solutions to sustainable recovery in the sectors of shelter, WASH and livelihoods, with strengthened community resilience and NRCS operational capacity.

Based on the DDA, NRCS community consultations and the outcomes from the NRCS lesson learnt workshops, NRCS will develop a fully integrated programme plan to address the needs identified.

In summary, the expected main activities will be:

<p>1</p> <h3>Housing</h3> <p>NRCS will support the authorities to finalize their NPR 400,000 grants, by mobilizing technical volunteers and masons in Karnali province. With support from IFRC/American RC, NRCS is already providing this support in Doti District.</p>	<p>2</p> <h3>WASH</h3> <p>Rehabilitation efforts will target the 90 damaged water schemes in Ilam, Jhapa, Jajarkot, Rukum West, Kavre and Sindhuli to restore water access for 850 households.</p>	<p>3</p> <h3>Livelihoods</h3> <p>NRCS will prioritize households in Jhapa and Ilam, where agricultural lands were destroyed. An additional assessment will be organized to confirm needs and targeting</p>
---	---	---

4.1 Notes on geographical scope

This proposal focuses on activities in the following six districts:

- **Jajarkot** and **Rukum West** Districts, affected by the earthquake of 2023,
- **Kavre** and **Sindhuli** Districts, affected by the floods and landslides of 2024, and
- **Ilam** and **Jhapa** Districts, affected by the floods and landslides of 2025.

In each case, these were the districts that were hardest hit by their respective disaster. In Jajarkot and Rukum West, the proposal intends to support safe shelter awareness and livelihood promotions. The unmet needs of the affected population extend to livelihood options impacted by the earthquake and safe shelter awareness activities required as an adjunct to the funds now to be transferred by the Government for permanent shelter construction. In addition, the damaged water schemes, mainly reservoir tanks, need to be reconstructed.

In Kavre and Sindhuli, the proposed funding will be utilized to rehabilitate damaged drinking water facilities. The flood and landslide damaged a large number of water schemes in both districts, and people living in the affected areas still do not have access to safe drinking water. Likewise, safer shelter awareness activities will be implemented in the affected areas as the Government is considering providing cash grant support for permanent shelter.

In Ilam and Jhapa districts, WASH activities (toilet construction and drinking water facilities renovation, and hygiene promotion activities) will be implemented in case of funding availability. The flood of August 2025 swept away household toilets, and tubewells/deep wells/water schemes were damaged. Additionally, the impacted households of Jhapa and Ilam have lost livelihood options due to floods and landslides. Therefore, this proposal intends to provide a cash grant for livelihood and carry out cash-for-work activities.

4.2 Permanent housing

To ensure safe, sustainable, and disaster-resilient housing for affected communities' shelter is one of the key areas. To complement the government's commitment to support reconstruction through cash grants for the construction of permanent shelter, this initiative will focus on community-based capacity building through technical training, awareness sessions on safe construction practices, and community engagement in disaster risk reduction. Special emphasis will be placed on promoting Build Back Safer principles, integrating local materials and techniques, and enhancing community preparedness. The major interventions under shelter are as follows:

- Sensitization to communities on safe infrastructure construction with 20 events
- Compressed stabilized earth blocks (CSEB) connecting with the livelihoods through 4 schemes
- 4 events of plumbers and masons (crosscutting with housing and WASH)

4.3 Water, sanitation and hygiene (WASH)

WASH interventions will restore access to clean water and sanitation, reducing the incidence of waterborne diseases and improving overall health outcomes. Hygiene promotion and infrastructure rehabilitation will enhance community resilience and preparedness.

While the reconstruction of drinking water schemes has been implemented by several development actors as part of the early recovery of the earthquake and floods response plans, additional needs still persist. Especially in the communities affected by the Bagmati floods where most water schemes where emergency constructions are not built to withstand future monsoons. The approach restores access to clean water, improves sanitation, and promotes hygiene to meet both immediate and long-term needs (including protection from diseases like cholera, diarrhea, typhoid etc.) Hygiene promotional activities are another major area for intervention. The major interventions under WASH are as follows:



4.4 Livelihoods

Livelihood support will enable affected households to rebuild income sources through cash grants, agricultural inputs, and skill-based training. This will contribute to economic recovery and food security, especially for marginalized groups.

As mentioned above, livelihoods came out as the top priority need among people across the earthquake/flood-affected areas in the last survey led by the UN JRAP. While livelihood support has previously been provided in the areas affected by the Jajarkot earthquake, it targeted mostly those with fully damaged houses rather than those whose livelihoods were mostly affected. For the affected areas in Bagmati, very little livelihoods support was provided as part of the emergency response, although many households lost their fields, even if their houses were spared.

Their needs continue to the present, according to our contacts (to be confirmed with a detailed assessment, when funding is made available), as noted by these local voices:

"I have a buffalo, but I don't have access to the market for selling milk. If the Red Cross supports linking the farmers to the market, it would be great"

- One of the affected households from Jajarkot District.

"Livelihood activities related to the high-value crop/ cash crops in the upper belt of Bheri Municipality, are required along with the formation of the agricultural group and linking them with the concerned line agencies"

- Ward Chair, Bheri Municipality, Jajarkot District

"We still require support for the improved breed of livestock (goat), improved shed construction, and other trainings."

- One of the beneficiaries from Rukum West District.

This initiative will support affected households through cash grants, agricultural inputs, and skill-based training to rebuild their livelihoods. Special focus will be given to vulnerable groups, including women, marginalized communities, and small-scale farmers, ensuring they can resume farming, livestock rearing, and small businesses. The major interventions envisioned under livelihood are as follows:

- 6 events of skill-based training: Both agricultural and non-agricultural work
- Sustaining livelihoods: Provision for livestock rearing promotion for local crops production/kitchen gardening for 2,100 households, reaching 10,500 persons
- 6 events of CVA training for livelihood support
- Cash for work (WASH and livelihood intervention interlinked) for 200 households

4.5 Mainstreaming protection, gender, inclusion, community engagement and sustainability

NRCS will integrate protection, gender, and inclusion (PGI) and community engagement and accountability (CEA) related activities into the recovery operation. PGI intervention will ensure the inclusion and protection of vulnerable groups, while CEA will promote two-way communication, feedback mechanisms, and community participation in decision-making.

NRCS also propose some branch-level development activities (referred to as "National Society Development" (NSD)) to strengthen NRCS's capacity for future events through staff training and operational improvements. Due to the high turnover of the trained volunteers, the branches are lacking adequate numbers of volunteers for post-disaster assessment and relief management. Likewise, the proper documentation and tracking of relief items from the centre to the distribution points is one of the major challenges in ensuring timely relief services.

Considering these challenges, the proposal will focus on the following activities:

- Train the pool of first responders on post-disaster assessment and relief management including development of Standard Operating Procedures.
- Digitization of the warehouse and relief items tracking system by developing software
- Prepositioning of non-food relief items at local branches

4.6 Government engagement and support

Our engagement efforts will strengthen coordination with government stakeholders and influence policy to ensure inclusive recovery planning and budget allocations. NRCS will promote community engagement and accountability throughout the recovery process.

To ensure sustainable and inclusive recovery, NRCS will engage with authorities in local, provincial, and national levels. These activities aim to encourage and offer our support, as auxiliary to the public authorities, in pushing forward recovery efforts that are people-centered and aligned with community needs. Key activities include:

Palika (municipality), district and provincial levels:

- Facilitate multi-stakeholder dialogues with local government, community leaders, and affected populations.
- Engage with provincial planning bodies to inform them about recovery needs in underserved districts and municipalities in support of their reflections on budget allocations.
- Collaborate with provincial DRR platforms and sectoral ministries to align recovery efforts with long-term resilience strategies.
- Support integration of DRR and climate resilience into municipal, district and provincial development planning.
- Support deployment of engineers and masons and explore partnerships with technical institutes for internships.
- Promote inclusive targeting criteria and community feedback mechanisms to inform local decision-making.

National level:

- Engage with relevant ministries (NDRRMA, MoUD, MoHP, MoFAGA) to:
 - Share experience on possible approaches for potential compensation mechanisms for households with partial damage and agricultural losses.
 - Promote inclusion of livelihood and social protection in national recovery frameworks.
 - Support their coordination between humanitarian and development actors.
- Present findings from perception studies and lessons learned to influence future policy and funding priorities.

5 Monitoring, evaluation and learning

NRCS will implement a robust MEAL framework to ensure that the recovery intervention is effective, accountable, and responsive to community needs. Monitoring will be conducted regularly through field visits, progress tracking tools, and coordination meetings with local stakeholders. The MEAL Framework will include logframe, implementation plan, monitoring plan, indicator tracking table (ITT) and workplan.

Evaluation activities will include baseline and end-line assessments to measure the impact of shelter, WASH, livelihoods, and advocacy interventions on the targeted population. These assessments will be reviewed at the evaluation stage to measure progress, assess relevance, identify lessons learned and inform future programming.

Community feedback mechanisms will be integrated throughout the project cycle. NRCS will establish channels for two-way communication, including suggestion boxes, hotline numbers, and community meetings, to ensure that voices of affected populations are heard and acted upon.

Learning will be documented and shared with partners and stakeholders through reports, workshops, and coordination platforms. This will support adaptive management and continuous improvement of recovery strategies, contributing to long-term resilience and institutional capacity building.

6 Overall budget and timeframe

Total: CHF 1,116,643 for 2 years across 6 districts

- **Shelter:** CHF 43,428 – Training, community sensitization, and technical support
- **WASH:** CHF 339,393 – Rehabilitation of water schemes, latrines, hygiene promotion
- **Livelihoods:** CHF 397,714 – Cash grants, agricultural inputs, skill-based training
- **PGI and CEA:** CHF 20,000 – Inclusion, feedback mechanisms, community engagement
- **National Society Development (NSD):** CHF 50,000 – Capacity building and systems strengthening
- **Government Engagement and Support:** CHF 30,000 – Multi-level advocacy activities
- **Planning, Monitoring, Evaluation and Reporting (PMER):** CHF 50,000 - Capacity building, baseline, endline, monitoring, evaluation.

Timeframe	Key Activities / Phase
Months 1-3	Start-up, staff/volunteer recruitment, baseline, PMER setup, initial consultations, initial orientation/community sensitization, site selection for WASH schemes and beneficiary selection for shelter/livelihood
Months 4-6	Shelter trainings; start WASH rehabilitation; hygiene/BCC rollout; initial livelihood trainings, procurement process, cash grant/cash transfer
Months 7-12	Major implementation: water scheme rehabilitation, toilet construction, livelihood support, Cash-for-Work
Months 13-18	Continued implementation: remaining WASH works, livelihood scaling, PGI/CEA consolidation, government engagement
Months 19-22	Consolidation: finalize works, strengthen local structures, documentation, preparation for endline
Months 22-24	Endline, evaluation, reporting, handover

7 Detailed budget

SN	Sector/Activities	Unit	#	Rate	Amount (NPR)	Amount (CHF)
1	Shelter				7,600,000.00	43,428.57
1.1.	Mason training for safe shelter construction and mobilization	Event	4	300000	1,200,000.00	6,857.14
1.2.	Sensitization to communities on safe infrastructure construction	Event	20	20000	400,000.00	2,285.71
1.3.	Compressed stabilized Earth blocks (CSEB) connecting with the livelihoods.	Unit	4	1500000	6,000,000.00	34,285.71
2	Health & WASH				59,393,783.13	339,393.05
2.1.	Rehabilitation of damaged water facilities at schools and communities	Scheme	90	534,397.59	48,095,783.13	274,833.05
2.2.	Chlorination in drinking water schemes	Schemes	90	200	18,000.00	102.86
2.3.	Safe drinking water support for communities (water quality testing and sensitization)	Scheme	90	2000	180,000.00	1,028.57
2.4.	Households and school latrine construction/rehabilitation	Schemes	603	17413	10,500,000.00	60,000.00
2.5.	Hygiene promotional activities including sensitization on waste management at schools and communities	Events	30	20000	600,000.00	3,428.57
3	Livelihood				69,600,000.00	397,714.29
3.1.	Skill-based training: Both agricultural and non-agricultural work	Event	6	300000	1,800,000.00	10,285.71
3.2.	Plumbers and masons training, crosscutting with Shelter and WASH)					
3.3.	Sustaining of livelihoods: Provision for livestock rearing promotion for local crops production/kitchen gardening	HHS	2100	30000	63,000,000.00	360,000.00
3.4.	CVA training for livelihood support	Event	6	300000	1,800,000.00	10,285.71
3.5.	Cash for work (WASH and livelihood intervention interlinked)	HHS	200	15000	3,000,000.00	17,142.86
4	PGI, CEA and Red Cross preparedness	Lump Sum	1		12,250,000.00	70,000.00
5	Government engagement and support	Lump Sum	1		5,250,000.00	30,000.00
6	PMER	Lump Sum	1		8,750,000.00	50,000.00
A	Activity Cost				162,843,783.13	930,535.90
B	Personnel and operation Cost	Lump Sum	1		32,568,756.63	186,107.18
C	IFRC program and support cost					46,526.80
Grand Total (A+B)					195,412,539.76	1,163,169.88

[1 NPL HumanitarianNeedsPriorities Floods Response Plan.pdf](#)

[2 https://ndrrma.gov.np/en/all-publications/179](https://ndrrma.gov.np/en/all-publications/179)

[3 https://nepal.un.org/en/280713-humanitarian-needs-and-priorities-flood-response-plan-nepal-2024](https://nepal.un.org/en/280713-humanitarian-needs-and-priorities-flood-response-plan-nepal-2024)